

N A I S H  
ESTATE AGENTS



YORK  
EST. 1939



33 Dringthorpe Road  
, York, YO24 1NF

Stunning six-bedroom semi-detached house just off Tadcaster Road, York

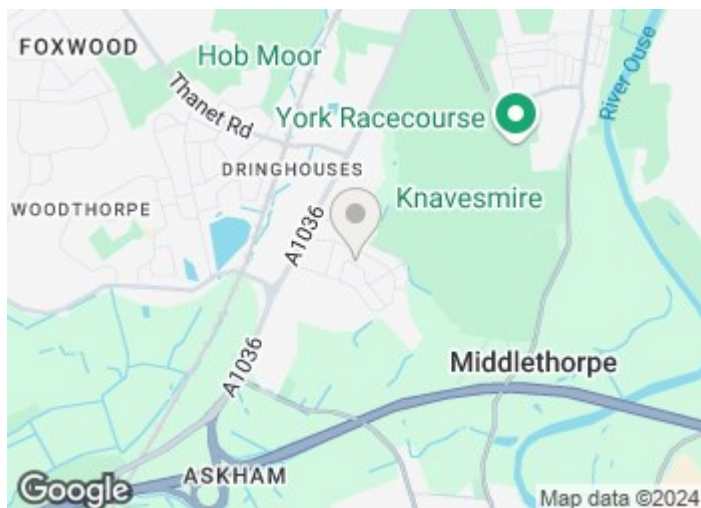
**Asking Price £650,000**

# 33 Dringthorpe Road

, York, YO24 1NF



- Six Bedrooms
- Incredible open plan living
- Beautifully presented throughout
- Spacious garden
- Three bathrooms
- Off street parking

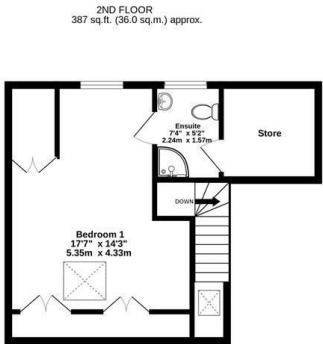
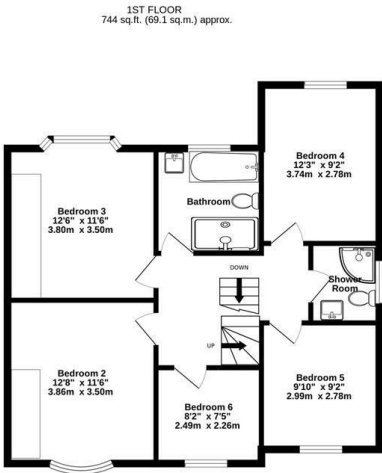
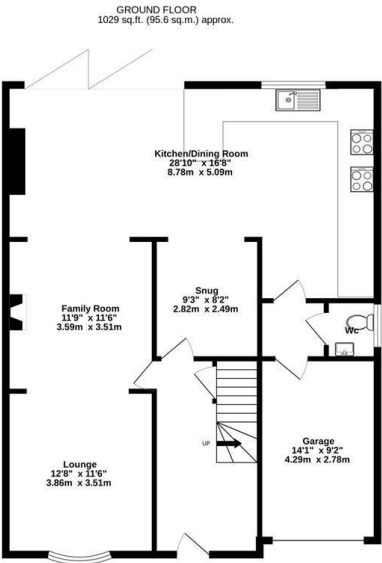


Directions





Floor Plan



TOTAL FLOOR AREA : 2160 sq.ft. (200.7 sq.m.) approx.

Whilst every attempt has been made to ensure the accuracy of the floorplan contained here, measurements of doors, windows, rooms and any other items are approximate and no responsibility is taken for any error, omission or mis-statement. This plan is for illustrative purposes only and should be used as such by any prospective purchaser. The services, systems and appliances shown have not been tested and no guarantee as to their operability or efficiency can be given.

Made with Metropix ©2024



These particulars, whilst believed to be accurate are set out as a general outline only for guidance and do not constitute any part of an offer or contract. Intending purchasers should not rely on them as statements of representation of fact, but must satisfy themselves by inspection or otherwise as to their accuracy. No person in this firms employment has the authority to make or give any representation or warranty in respect of the property.

Energy Efficiency Rating		
	Current	Potential
Very energy efficient - lower running costs		
(92 plus) <b>A</b>		
(81-91) <b>B</b>		<b>81</b>
(69-80) <b>C</b>	<b>71</b>	
(55-68) <b>D</b>		
(39-54) <b>E</b>		
(21-38) <b>F</b>		
(1-20) <b>G</b>		
Not energy efficient - higher running costs		
England & Wales	EU Directive 2002/91/EC	